

A white mobile office trailer with green doors and a hitch, shown from a side profile against a dark background. The trailer has a single green door on the side and a larger green door at the front. It is equipped with a hitch and a single wheel. The brand name 'CERCHI' is visible on the side.

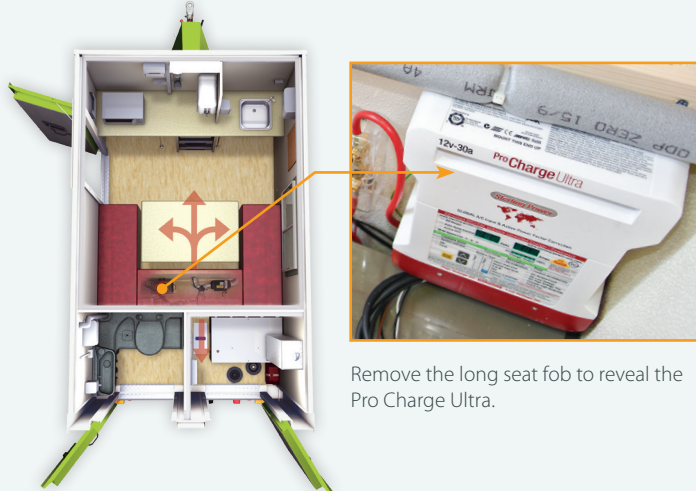
from **groundhog**



## Locating the Pro Charge Ultra

### Fusion Mobile

In the Fusion Mobile, the Pro Charge Ultra is located under the seat in the canteen area.



### Fusion Static

In the Fusion Static, the Pro Charge Ultra is located within the battery storage unit in the generator area.



## The issue...

Over the past few months, Groundhog UK Ltd have received a number of queries about the 130Amp hour battery in our customers' Fusion units going flat over periods of none use.

Our customers are able to start the generator to provide 230 volt electric for powering the battery charger.

However, as the voltage in the 130Amp hour battery is below 6 volts, the charger does not recognise that it is connected to a battery.

## The investigation...

After an investigation, we found that customers who have the AMS tracking systems fitted are most likely to see this issue as the tracker is not fitted through the battery guard which normally prevents the voltage dropping below 10.5 volts.

The tracker is fitted directly off the battery to ensure there is a constant 12 volt supply for maintaining a constant signal to the service provider.

## The solution...

Simply reset your Sterling Power battery charger from '**battery charging**' mode to '**power supply**' mode.

When the 130Amp hour battery is fully charged in '**power supply**' mode, *the charger will not shut off* but will *become the provider of the 12 volt power for appliances within the unit*. Also (in the '**power supply**' mode), the charger *does not require voltage from the 12 volt battery* to start giving an output.

**Please note:** Using the '**power supply**' mode makes no difference to the set up of the unit.

Please follow steps 1-5 to reset battery charger

## Resetting the Sterling Power 130Amp battery charger programme

**Voltmeter**, showing the average voltage being produced by the charger.

**Ammeter**, shows the total current being produced by the charger.

Setup/Enter (B)

Up and Down arrow buttons to select charge options (A)

**1** Start the generator

**6kVA generator**

Press the ON/OFF button then press and hold the start button until the engine is running.

To stop the engine, press the ON/OFF button.

MGTP 6000 SS LA

**9.8kVA generator**

Turn key to GL on control panel, wait for the glow plug light to go out then turn key to ST (start).

To stop the engine, turn key to the OFF position.

MGMK 10000-300

**2** On start up the battery charger will first show "888" in Voltmeter & Ammeter windows.

**3** The display then changes to 'bc'.

**4** Press either Up or Down arrow button (A) to toggle to 'PS'.

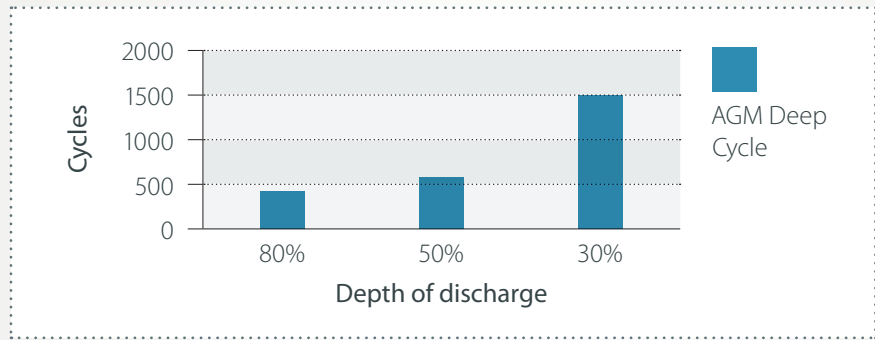
**5** When the display reads 'PS', press and hold Setup/Enter (B) for 5 seconds.

Once stage 5 is completed, your Sterling Power battery charger is set to '**Power Supply**' mode.

This can be checked by switching off the generator and restarting when the charger goes off; on start up you should see 'PS' rather than 'bc'. If 'bc' is still displayed, please repeat procedure.

# Cycle life of batteries

Batteries age due to discharging and recharging. The number of cycles depends on the depth of discharge, as shown below.



## PLEASE NOTE:

Discharging the 130Amp hour battery down to below 10 volts can decrease the life cycle of your battery dramatically.

It is advised that all Groundhog units are started twice a week and run for the full 3 hour cycle to prolong the battery life.



**Tel** 01639 641166

**Email** [sales@groundhog.co.uk](mailto:sales@groundhog.co.uk)

**[www.groundhog.co.uk](http://www.groundhog.co.uk)**

Version 1.1 | 02/25

Copyright ©2025 Groundhog UK Limited. All rights reserved.

No part of this material may be reproduced in any form by any means without the express written permission of Groundhog UK Limited.