

i500

Ground lowering, anti-vandal, robust and easy-to-use **twin axle mobile** welfare accommodation unit.



INTELLIGENT POWER



HSE & CDM COMPLIANT

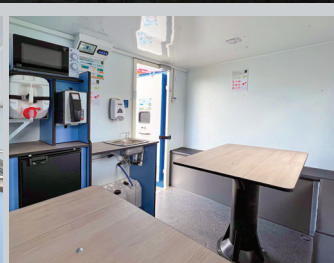


Securing site welfare

*When power unit not in use



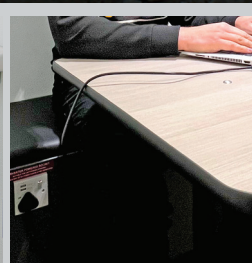
Welfare seating area



Well equipped canteen area



Toilet wash area



Inverter power sockets & USB



Hot drinking water boiler

Innovative, functional, environmentally efficient and cost effective.

The **mobile i500** offers the legendary robustness and ease of use of the Fusion Pulse **groundhog** mobile welfare unit whilst offering an enhanced green environmental solution.

Offering up to **100% reductions in carbon emissions** whilst on board power unit is not in use the i500 is designed to run in summer months without the onboard power unit running. During the winter period and night use the power unit will still be required, with a reduction in running of up to 90% when compared to the fusion pulse welfare unit.

The i500 has a compact overall size for towing, with a large welfare area with table and bench seating for 12 to 14 operatives - ideal for flexible on-site applications, **helping you achieve realistic carbon reduction goals, intelligently.**



Powered by x4 solar panels with on board power unit back up



Fully hot-dipped galvanised chassis



12V air blown heating system



Hot drinking water & microwave run off 12V system



12V LED lighting with PIR



Inverter powered sockets with USB connectors



2kVA highly efficient on board battery charger



HOGWATCH Intelligent Remote Monitoring system



Lowered & secured in 3 minutes

i500

Key features at a glance


SEATS UP TO 12 - 14 PEOPLE

Length	5000 mm
Length (including drawbar)	6320 mm
Height (on wheels)	2.9 m
Height (on ground)	2.5 m

Unladen Weight	2600 kg
Possible Gross Weight	3000 kg*
Solar Panels	x4
On board power unit	2 kVA

Fresh Water	2x 20 Litres
Toilet Water Tank (under seating)	55 Litres
Toilet Tank Size	350 Litres
Fuel Tank Size	32 Litres



ON-BOARD POWER UNIT

2kVA unit only runs when battery levels dictate. Ensuring zero loss of power



4 x SOLAR PANELS

Mounted on roof with large charger controller



INTELLIGENT BATTERY TECHNOLOGY

Auto start / stop to maintain optimum battery performance



HOGWATCH MONITOR & TRACK

To optimise carbon reduction whilst on site




ECO FULL FLUSH CERAMIC TOILET

With ceramic sink providing warm hand wash




HEATING SYSTEM

Delivers warm air and warm hand wash




SIGNIFICANTLY REDUCED RUNTIME



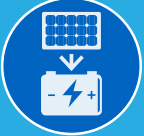
SIGNIFICANTLY REDUCED FUEL USAGE



LESS EMISSIONS



SIGNIFICANTLY REDUCED SERVICING COSTS



ON-BOARD POWER STORAGE SYSTEM

Helping you achieve realistic carbon reduction goals, **intelligently.**

* Fully laden gross weight exceeds maximum towing capacity; unit should be transported to site prior to making site ready



TEL: **01639 641166** | EMAIL: sales@groundhog.co.uk
www.groundhog.co.uk 
 Groundhog Ltd, Ynysygerwn Avenue, Aberdulais, Neath, SA10 8HH



Mobile Units have obtained type approval with **VCA**