

USER SAFETY GUIDE



Lifting Guidelines

A guide to safe lifting of **mobile** & **static** welfare accommodation units

from **groundhog**

CONTENTS

General Safety 03

Important information	03	Approximate unit weights	03
-----------------------------	----	--------------------------------	----

Mobile welfare accommodation units 04

Threaded bush	04	Mobile unit – lift using fork lift truck	06
Lifting eye	04	Mobile unit – lowered onto flatbed lorry	07
Mobile unit – lift using slings	05	Mobile unit – secured to lorry	08

Static welfare accommodation units 09

Lift using slings attached to low level lifting	09	Static unit – lowered onto flatbed lorry	11
Static unit – secured to lorry	10	Solar panel notice	11
Securing unit to flatbed by twist lock	10		

Prior to lifting operations, carry out the following:

1. Cordon off the working area.
2. Ensure all lifting equipment and accessories (slings, shackles & eye bolts) are in good condition and are free from defects.
3. Ensure that the SWL of the lifting equipment and accessories are suitably rated for the load.

TO BE CARRIED
OUT BY TRAINED
PERSONNEL ONLY.

NOTE: Toilet waste
MUST be emptied
prior to lifting.

Approximate unit weights

MOBILES

	Unladen weight (kg)	Possible gross weight (kg)
GP360 Single Axle Range	1,700	1,800
GP500 Twin Axle Range	2,300	2,700

STATICS

	Possible gross weight (kg)
SW6100 STD	4,300
SW6100 FUSION	4,480
SW6100 FUSION FULL FLUSH	5,150
SWO7600 STD	4,600
SWO7600 FUSION	4,700
SWO7600 FUSION PULSE	5,800
SWO7600 FUSION FULL FLUSH	6,600
SWO9700 FUSION FULL FLUSH	7,010

Threaded bush



- GP360M16
- GP500 / GPO500M20

Lifting eye



- GP360 1,800kg
- GP500 / GPO500 2,600kg
- GP360 5m slings
- GP500 / GPO500 6m slings

Capacity	Colour & stitching	SWL Single Sling Vertical Lift
2 TONNE sling (SWL 4.2T @ 0-45DEG)	Green + 2 central lines of stitching	2,000
3 TONNE sling (SWL 6.3T @ 0-45DEG)	Yellow + 3 central lines of stitching	3,000
5 TONNE sling (SWL 10.5T @ 0-45DEG)	Red + 5 central lines of stitching	5,000

NOTE: Sling dimensions are for guidance only



• Ensure the fork lift truck has the safe lift capacity:

GP360 1,800kg

GP500 / GPO500 2,600kg

• Ensure that the lift is undertaken on a level, hard surface.

NOTE: Ensure handbrake is on prior to lowering onto bed of lorry.

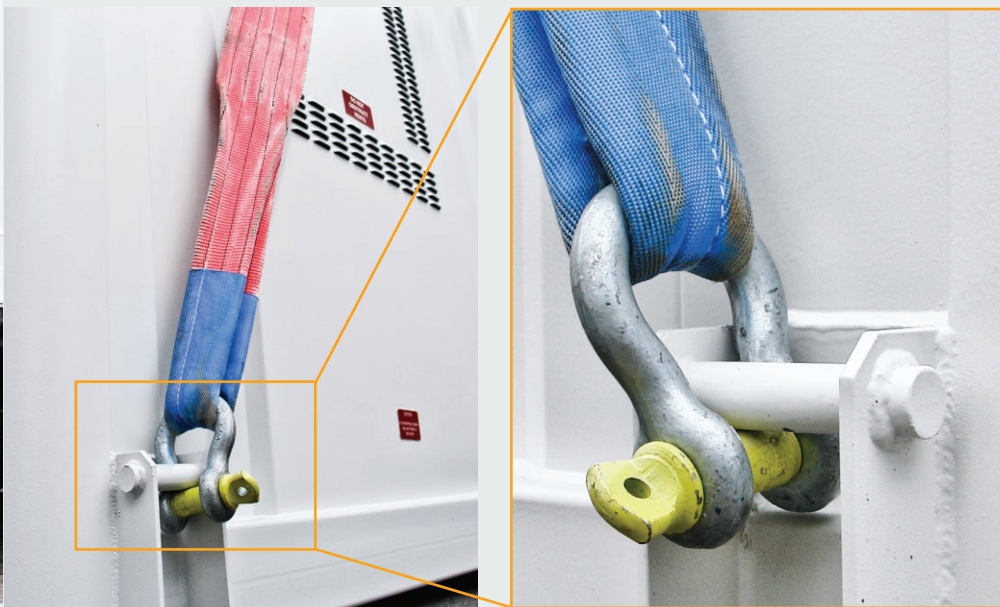
a. Straps on wheels



b. Tow hitch secured to lorry



Lift using slings attached to low level lifting



SWO7600 5,500kg
SWO9700 6,500kg

SWO7600
/ SWO9700 7m slings

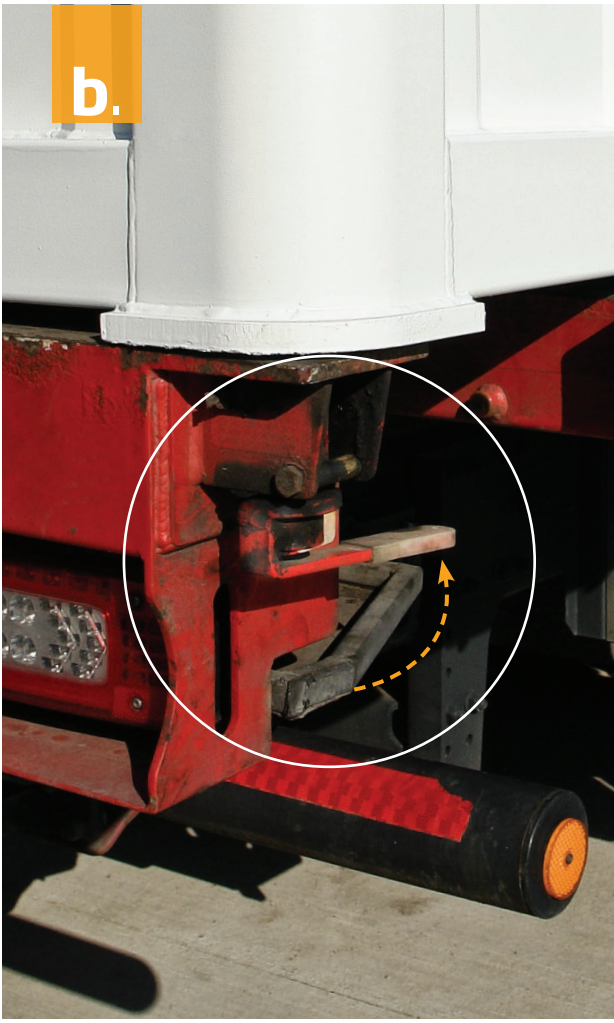
NOTE: Keep hands clear and do not stand under unit.

The ideal method of securing unit to flatbed is by twist lock

a. Static unit lowered onto twist-lock



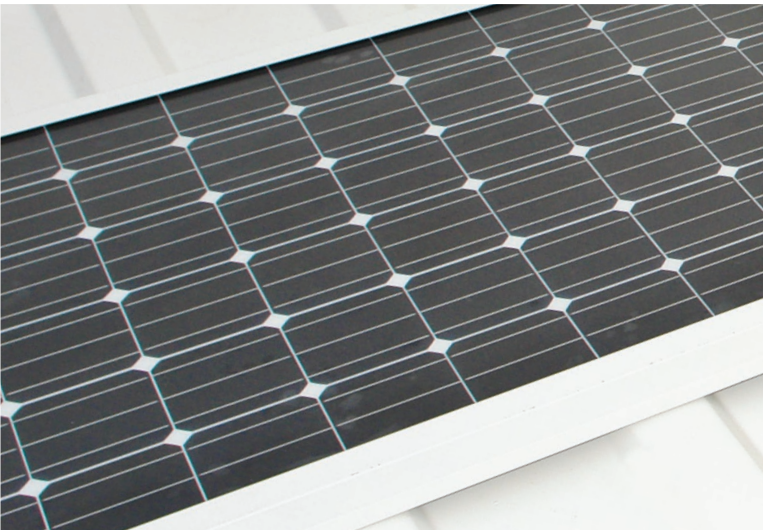
b. Twist-lock handle turned to secure unit to lorry



NOTE: If lorry is not equipped with twist-locks, then ratchet straps over the unit will be required to secure the load.



When securing static unit to flatbed lorry, we recommend using a minimum of **3 straps**.



Solar panels

When utilising straps over the roof of the unit, check that these do not damage roof mounted solar panels.



Tel 01639 641166

Email sales@groundhog.co.uk

www.groundhog.co.uk

Version 1.1 | 02/25

Copyright ©2025 Groundhog UK Limited. All rights reserved.

No part of this material may be reproduced in any form
by any means without the express written permission of Groundhog UK Limited.

* Weights and sizes shown may vary slightly. Groundhog reserve the right to change specification without prior notice.